

INSTRUMENT PREPARATION



SKYTEM

**TAKE OFF AT
INYOKERN AIRPORT**

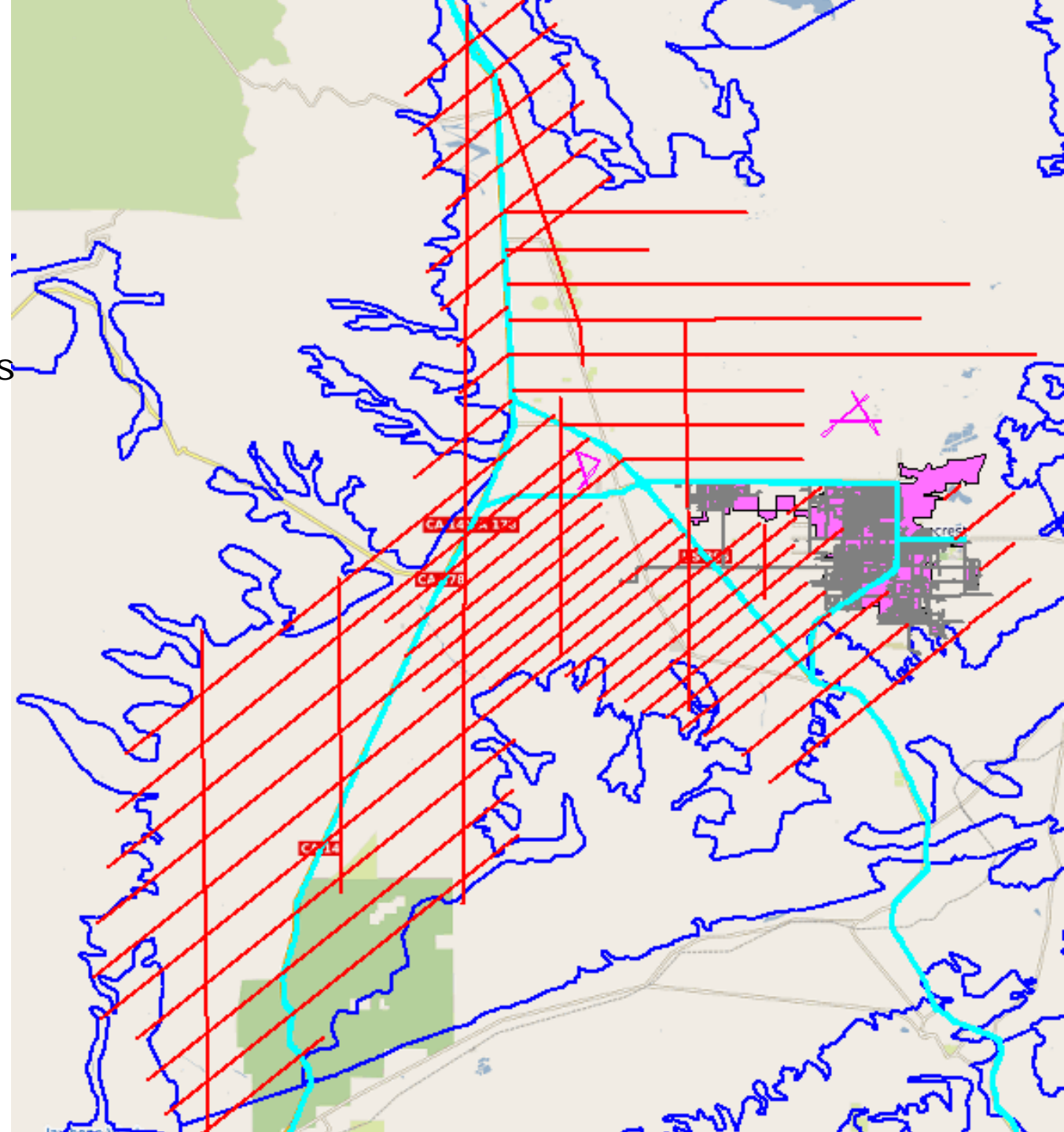
RAMBOLL





FLOWN LINES

- November 9th - Test flights
- November 10th – 12th – Production flights
- 800 Line km ~ 500 miles
- Data looks very promising



MOVING FORWARD

- Preliminary results of the SkyTEM survey ultimo December 2017
- Establish a database with existing data to be used for the Hydrogeological Conceptual model and by Stanford University.
- Final processing and inversion of the SkyTEM data Q1-2018
- The Hydrogeological Conceptual Model April 2018
- Database content
 - E-logs
 - Lithology
 - Basic information about the wells like depth, screen intervals, etc.
 - Depth to water table
 - Water quality (eg. salinity)
- Other data and information
 - Digital terrain model
 - Papers and reports