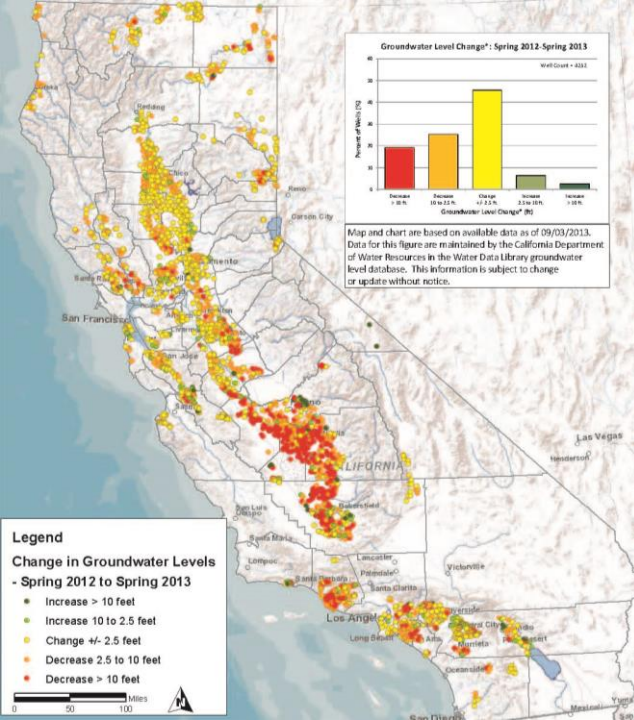
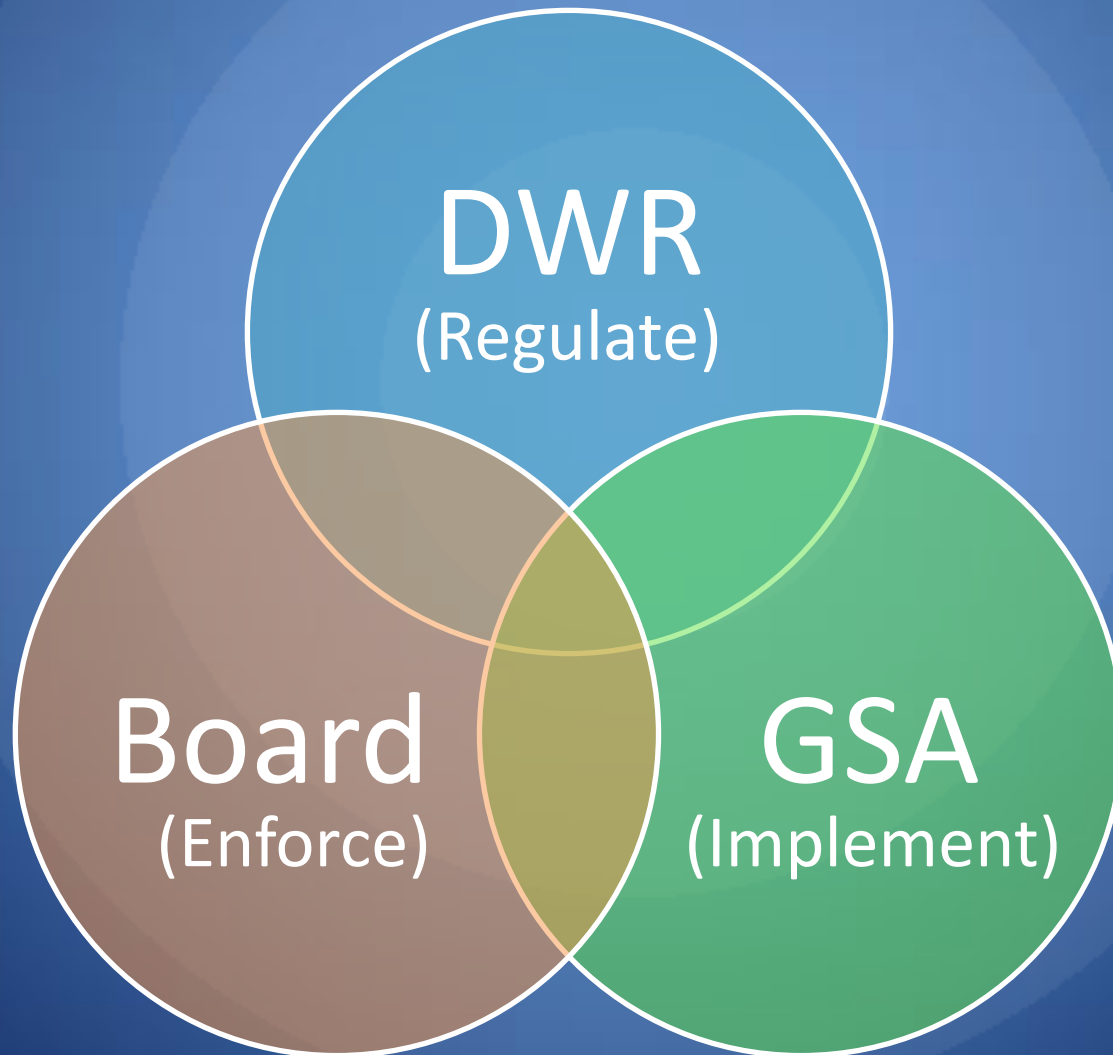


The State Water Board Role



Sam Boland-Brien
Groundwater Management Program
State Water Resources Control Board

SGMA gives important role separation



State Water Board Role

- The State Backstop:
 - Data Manager – Unmanaged areas
 - Report water use to State Board
 - State Board collects and interprets that data
 - Basin Manager
 - Interim plans
 - Directly manage groundwater resources
- Coordination with DWR:
 - Communication, Outreach, Data, Implementation

Intervention Basics

- In every circumstance, State Board can only step in when local efforts fail
- Numerous off-ramps for locals to avoid management by the state
- Process:
Eligible → Probation → Interim Plan

The “Backstop” Triggers

After	Intervention Trigger
June 30, 2017	Unmanaged Areas
Jan. 31, 2020	Basin in critical overdraft and either: 1) No plan 2) Inadequate plan
Jan. 31, 2022	1) No plan, or 2) Basin in long-term overdraft and inadequate plan
Jan. 31, 2025	Significant depletions of interconnected surface waters and inadequate plan

In all triggering events, intervention is the result of failure by locals to create a GSA or adopt and implement a GSP

Progression of State Backstop



Reporting

Unmanaged Areas AND
Probationary Areas

Role as Data Manager:

- Groundwater users report pumping data to State Water Board (Water Code §5203)
 - Place of extraction
 - Monthly records of volume of extractions
 - Purpose of use, description of place of use
- Probationary basins designations can require additional data and meter installation
- Developing data systems to ensure enforceability

Progression of State Backstop

Reporting

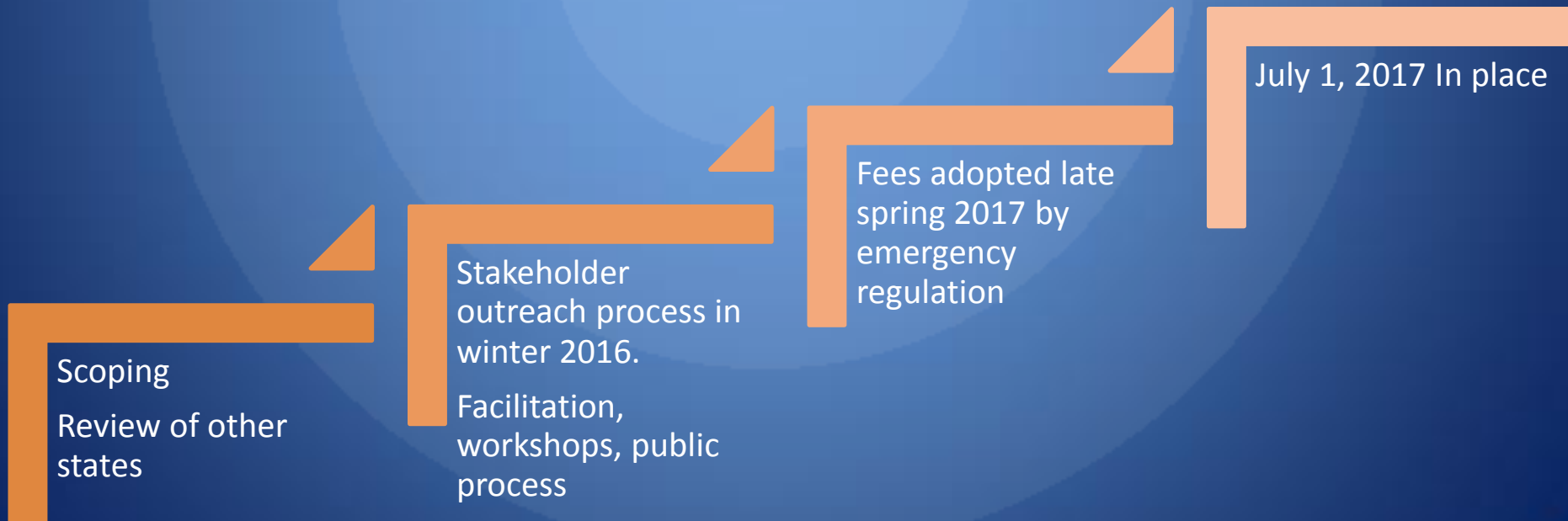
Unmanaged Areas AND
Probationary Areas

Fees

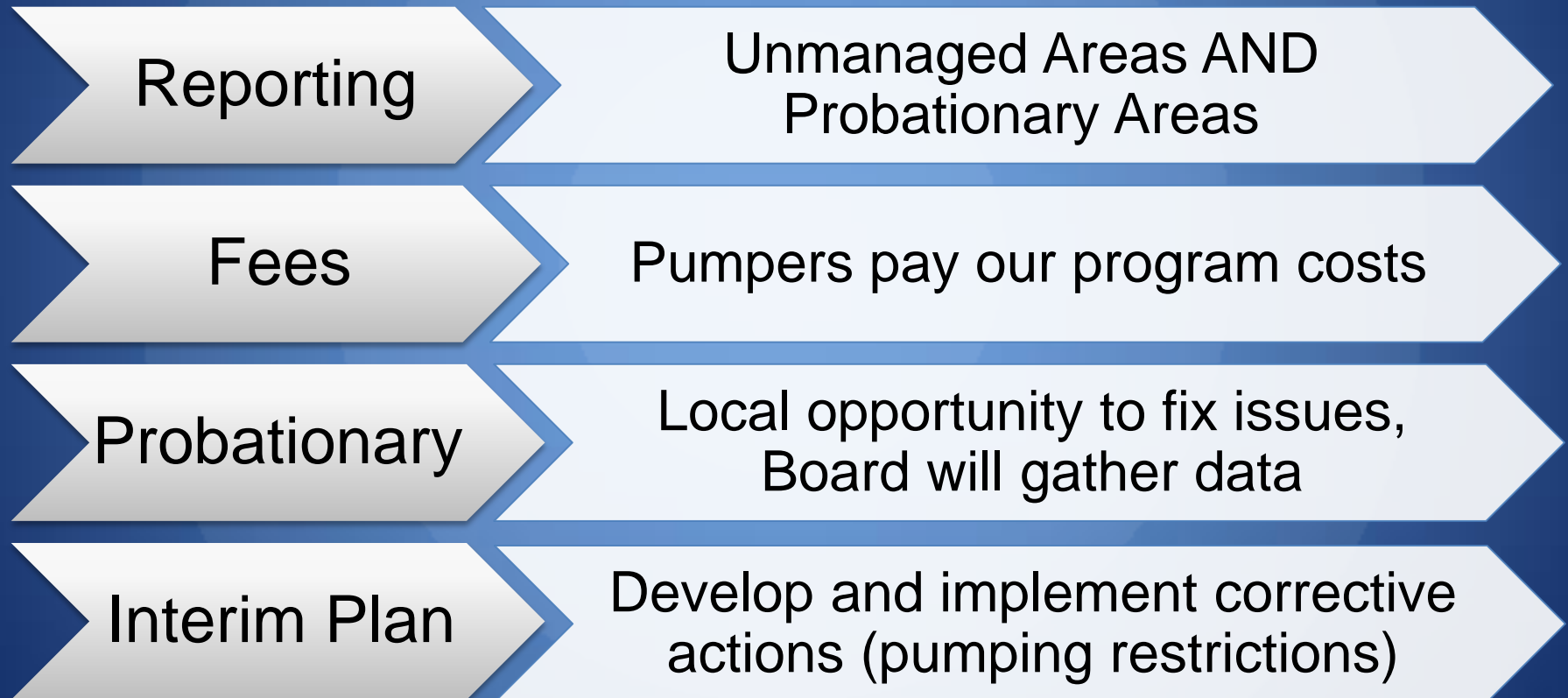
Pumpers pay our program costs

Fees

- Cover all costs related to backstop
 - Facilitation, investigation, monitoring, hearings, enforcement, administration
 - Extraction reporting and participation in Board hearings
- Fees need to be in place with data reporting system



Progression of State Backstop



Interim Plan – basin manager

- Must include:
 - Actions to correct long-term overdraft
 - A schedule
 - Monitoring
- Authorized to put restrictions on groundwater pumping
- State intervention is temporary – locals must petition Board and prove solutions

Note on adjudications

- SGMA prevents the “rush to the pump house” (Water Code § 10720.5)
- Groundwater adjudication process was reformed in 2015 by SB 226 and AB 1390
- Ensures consistency with SGMA and allows courts to issue preliminary injunctions on pumping

Finishing thoughts



Reporting

Fees

Probationary

Interim Plan

- Intervention only occurs where local efforts fail
- Local opportunities to remedy causes of intervention triggers
- Board will enforce where necessary and appropriate

Thank you

Questions?

Sam Boland-Brien

Sam.Boland-Brien@waterboards.ca.gov
(916) 322-9633

State: groundwater.ca.gov

DWR: water.ca.gov/groundwater

SWRCB: waterboards.ca.gov/gmp

