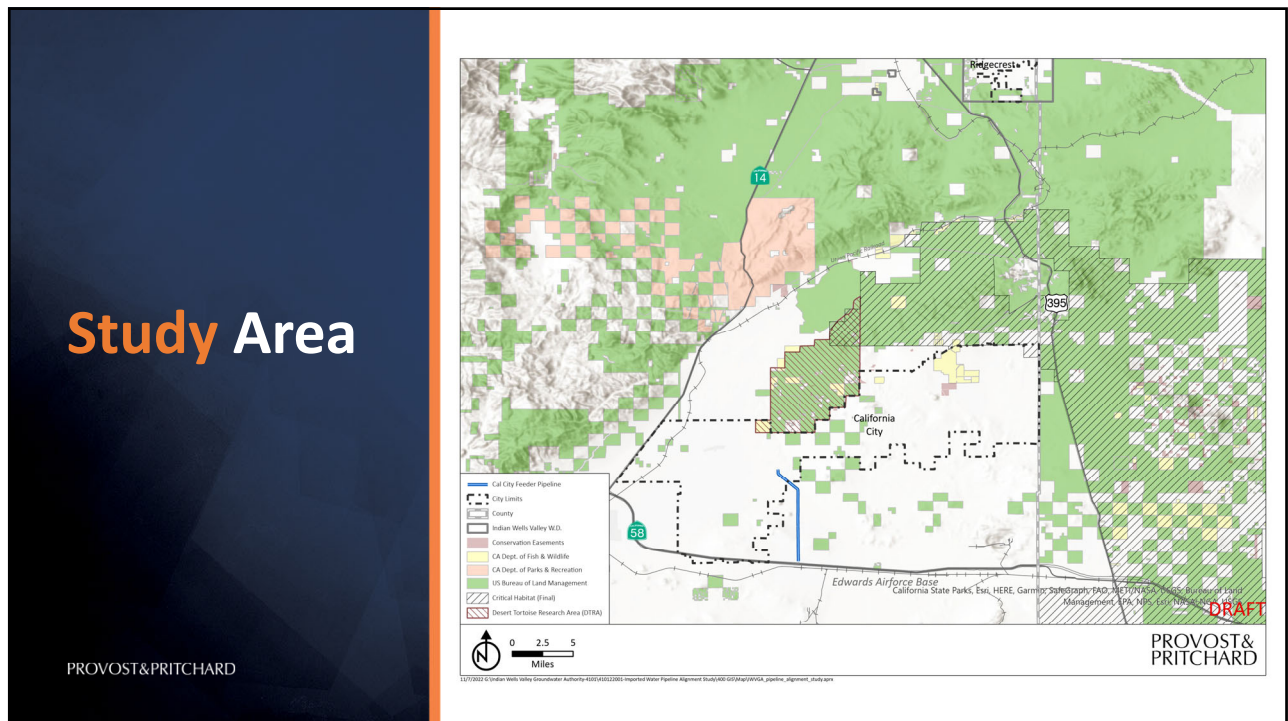
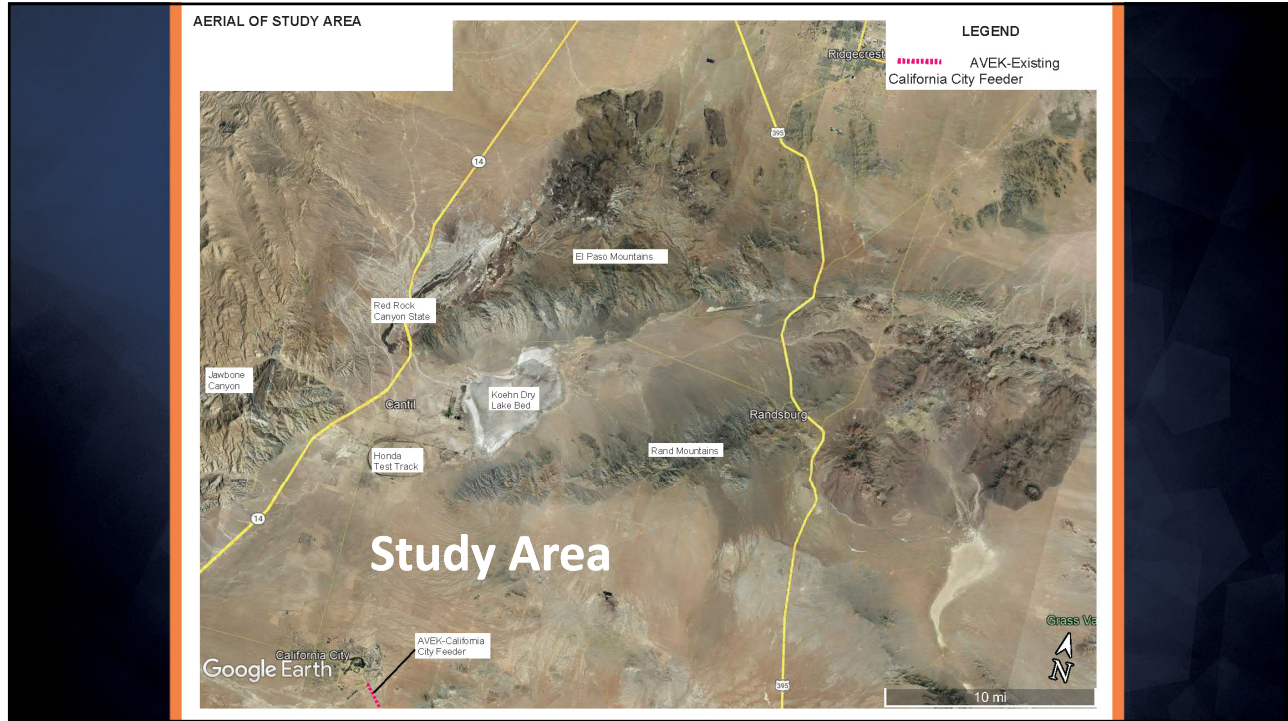




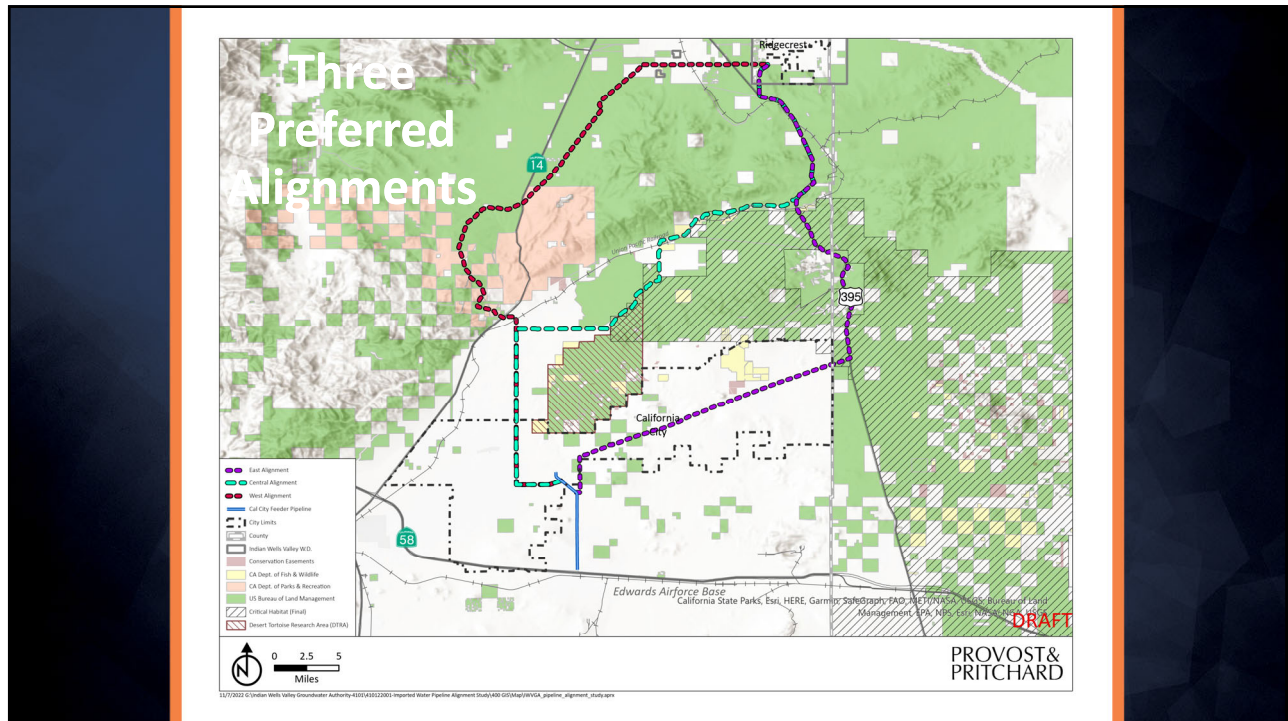
1



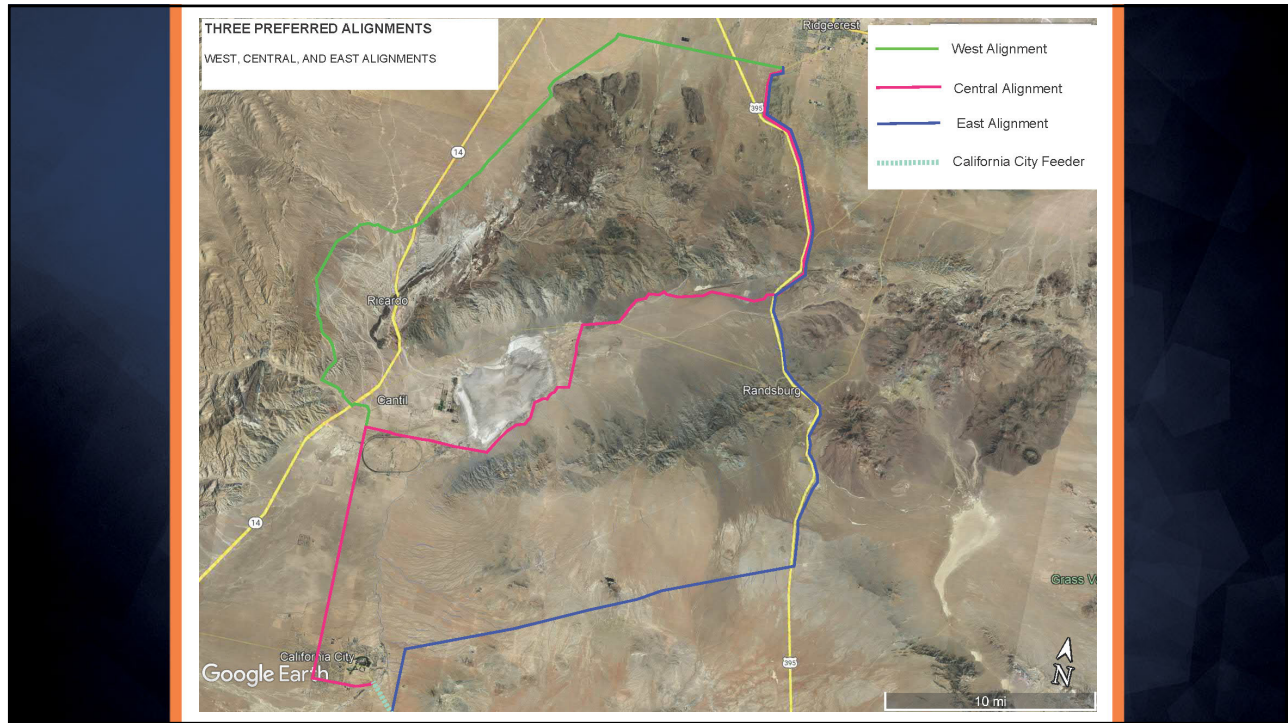
2



3



4



5

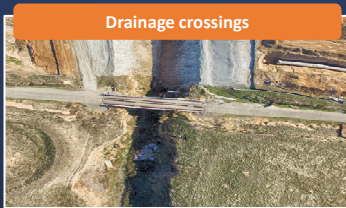
Key Issues

- Mountains (Rand and El Paso)**
- BLM, State Park, Recreation Area, Wilderness Area**
- Critical Habitat**
- Desert Tortoise Research Area**
- Power availability**
- Community disruption**

PROVOST&PRITCHARD

6

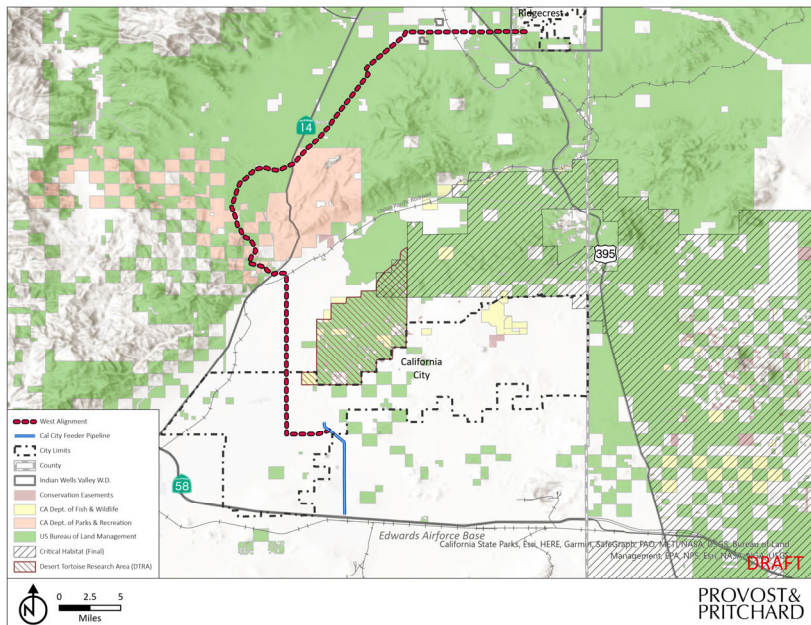
Other Issues



PROVOST&PRITCHARD

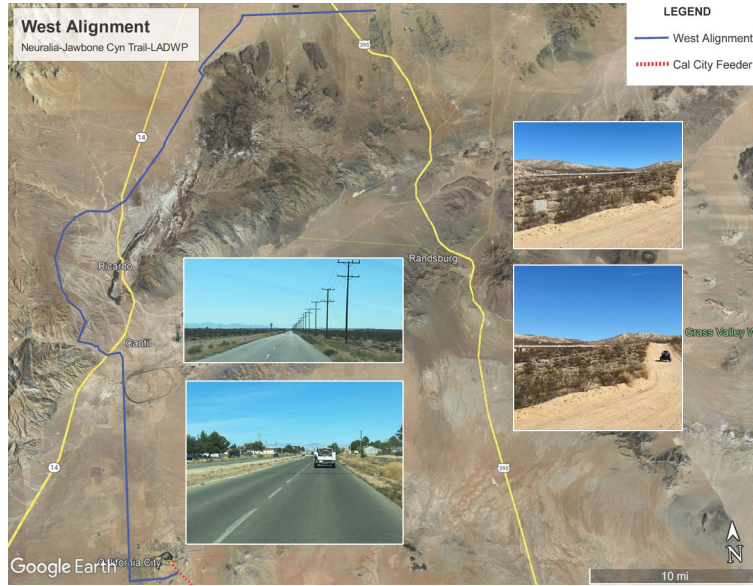
7

West Alignment



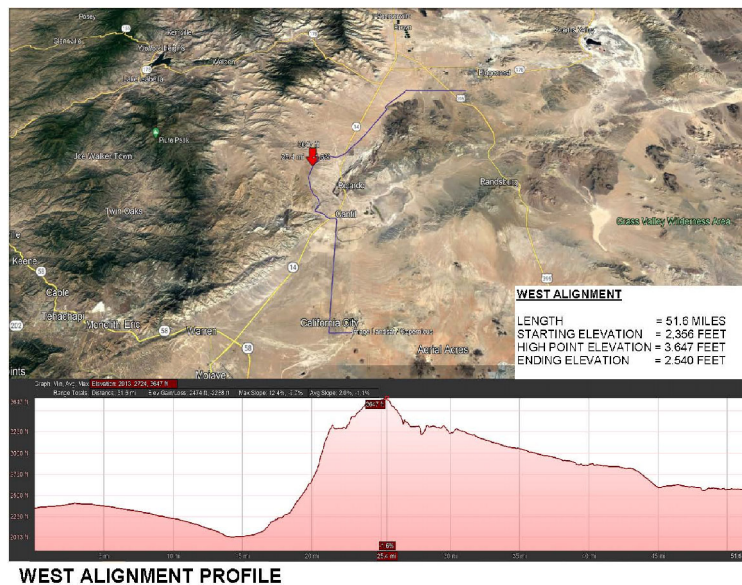
8

West Alignment



9

West Alignment



WEST ALIGNMENT PROFILE

10

West Alignment

Positive points

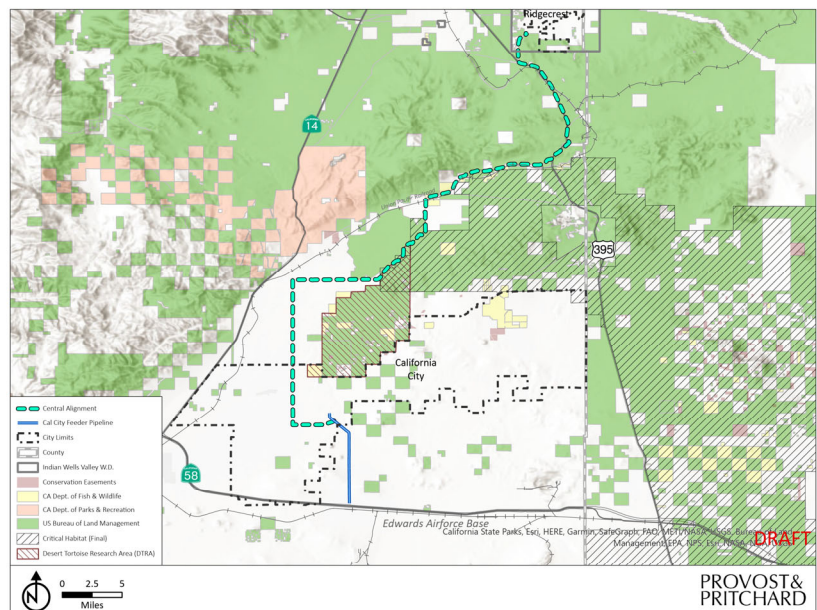
- No desert tortoise critical habitat
- Constructable

Negative points

- Power may not be available where needed
- Encroaches on Red Rock Canyon State Park, Dove Creek Recreation Area
- Four major road/railroad crossings

11

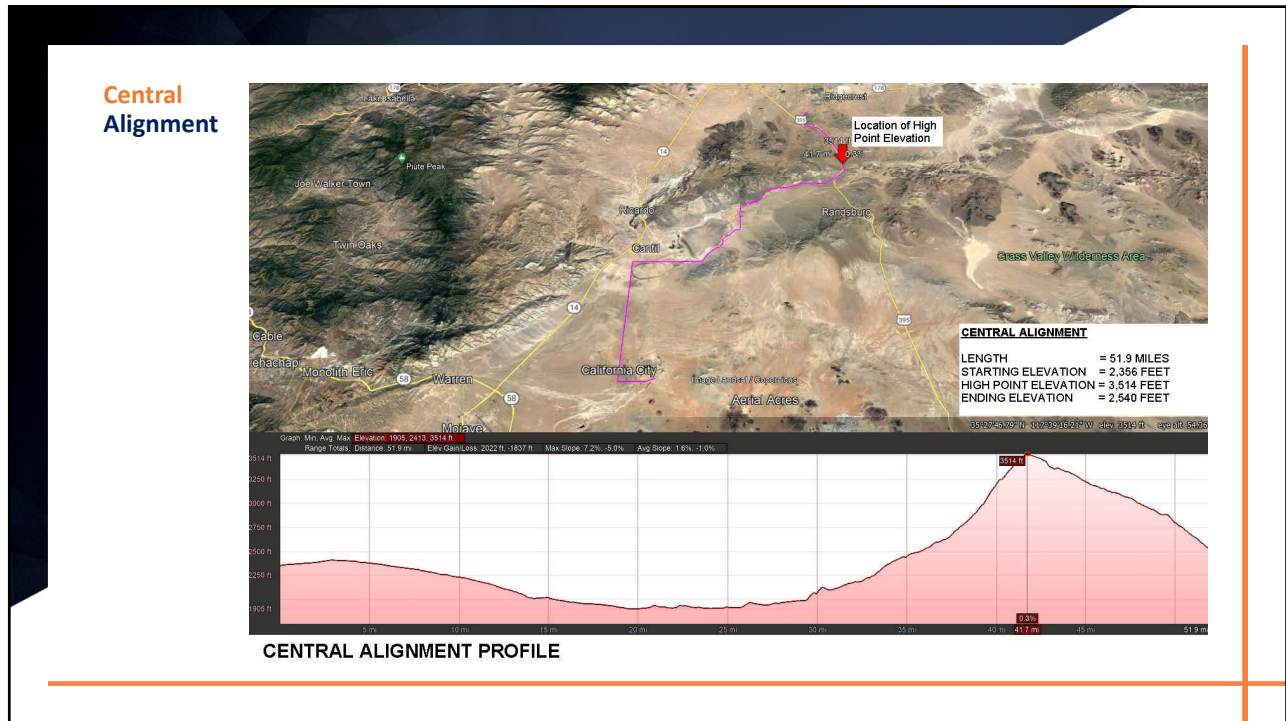
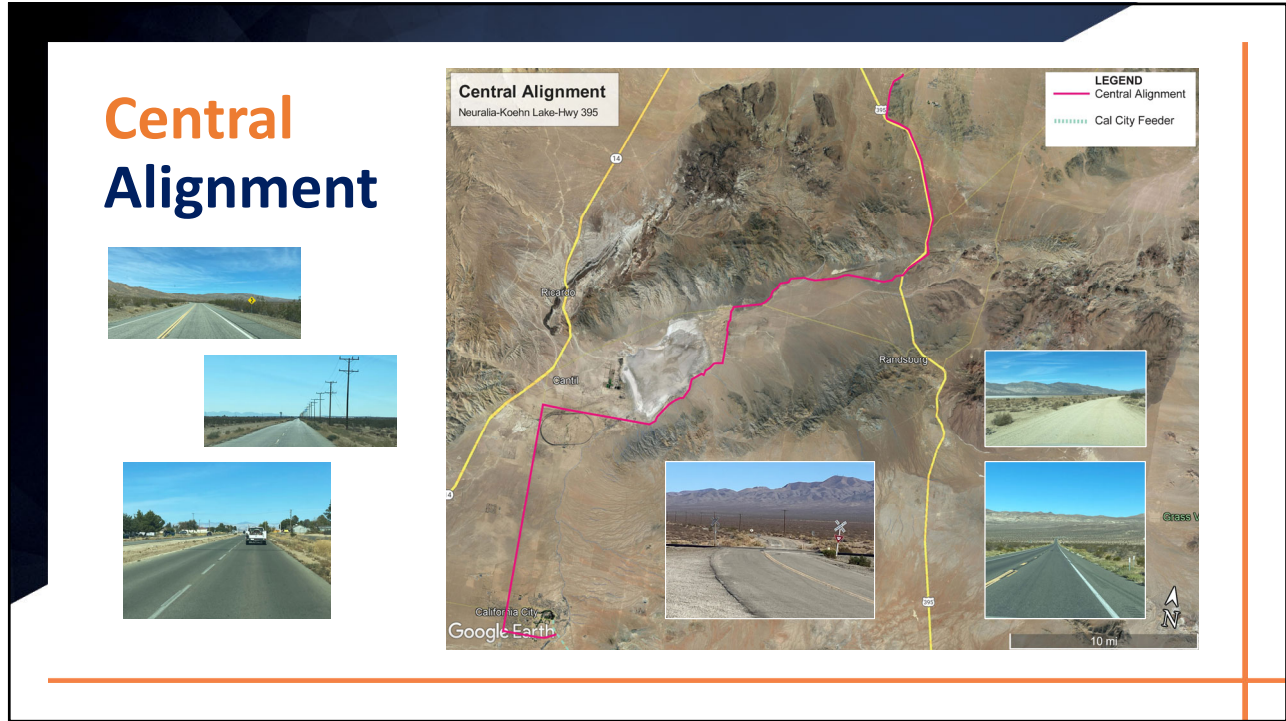
Central Alignment



PROVOST&PRITCHARD

PROVOST&PRITCHARD

12



Central Alignment

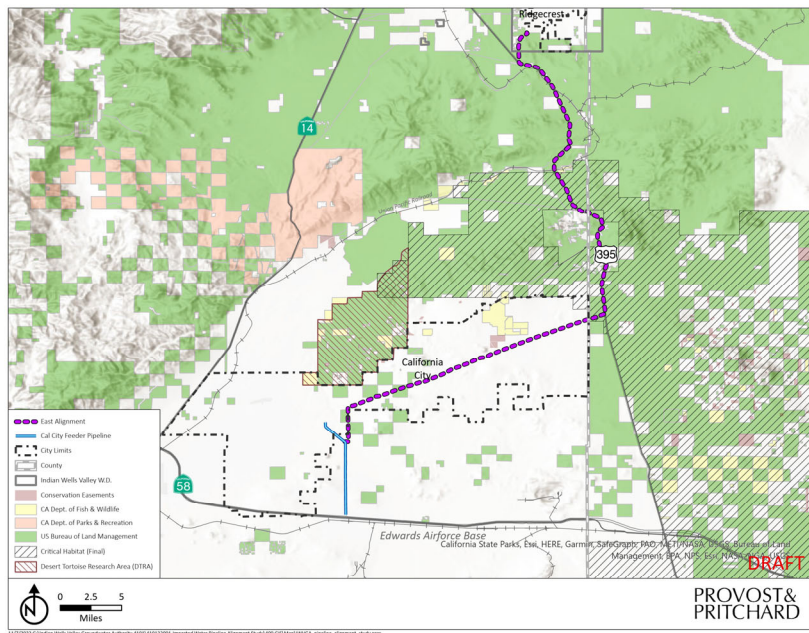
Positive points

- Constructable
- Maximizes use of existing roads

Negative points

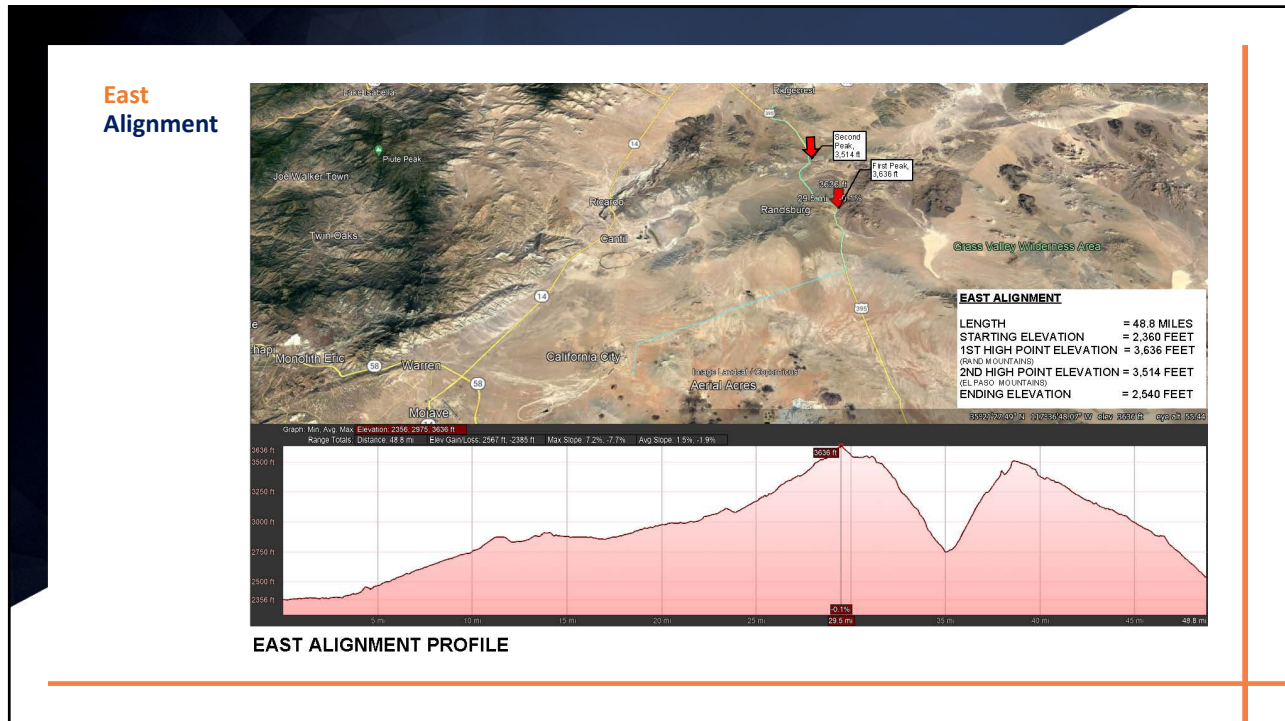
- Some critical habitat impacts
- Power may not be available where needed

East Alignment





17



18

East Alignment

Positive points

- Easy Construction
- Maximizes use of existing roads

Negative points

- Two lifts
- Some potential impacts to Johannesburg and Red Mountain
- Some impacts to critical habitat

19

Next Steps

Meet with resource agencies (**BLM, State Parks, Corps of Engineers, etc.**)

Develop **screening criteria and weighting factors**

Gather **stakeholder input** on weighting factors

Work with **SCE** on location of **power facilities**

Identify sites of **booster pump stations**

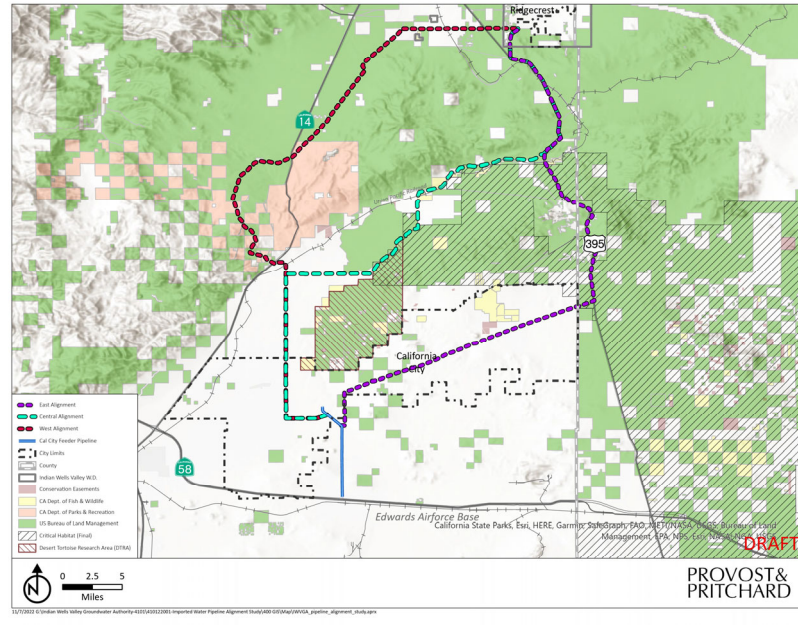
Research **parcel ownership** along all three alignments

Fine tune future water demands to **finalize pipe diameter**

20

Near Term Goal

Present a single preferred alignment to Board on December 14



21

QUESTIONS?

PROVOST&PRITCHARD

22